

By-Law No. 2017-328

A by-law of the City of Ottawa to amend By-law No. 2008-250 of the City of Ottawa to change the zoning of part the lands known municipally as 1156 Jinkinson Road

OttWatch.ca By-law Archival Project



OttWatch.ca has begun archiving copies of all by-laws passed by the City of Ottawa. After each City Council meeting we ask for copies of by-laws enacted at the meeting, add this title page, and upload them to ottwatch.ca.

Be aware though that you may not be looking at the most recent version of this by-law. It is very possible that it has been amended by Council by another by-law, or even by the Ontario Municipal Board. So, um, just know that before assuming anything.

This PDF contains a copy of the by-law as passed by Council on a certain date. It is a snapshot in time. It could still be in force. It might have been amended. It may have been repealed.

When in doubt, visit <http://ottawa.ca/en/residents/laws-licenses-and-permits/laws/laws-z>

If you end up asking for a copy of a by-law OttWatch doesn't have yet, please ask the Clerk's office to cc: kevino@kevino.net when they email it to you. You'd be doing the entire community a favour!

Enacted On: 2017-10-11

OttWatch Bylaw Reference: <http://ottwatch.ca/bylaws/2017-328>

This title page generated on 2017-12-02

BY-LAW NO. 2017 - 328

A by-law of the City of Ottawa to amend By-law No. 2008-250 of the City of Ottawa to change the zoning of part the lands known municipally as 1156 Jinkinson Road.

The Council of the City of Ottawa, pursuant to Section 34 of the *Planning Act*, R.S.O.1990, enacts as follows:

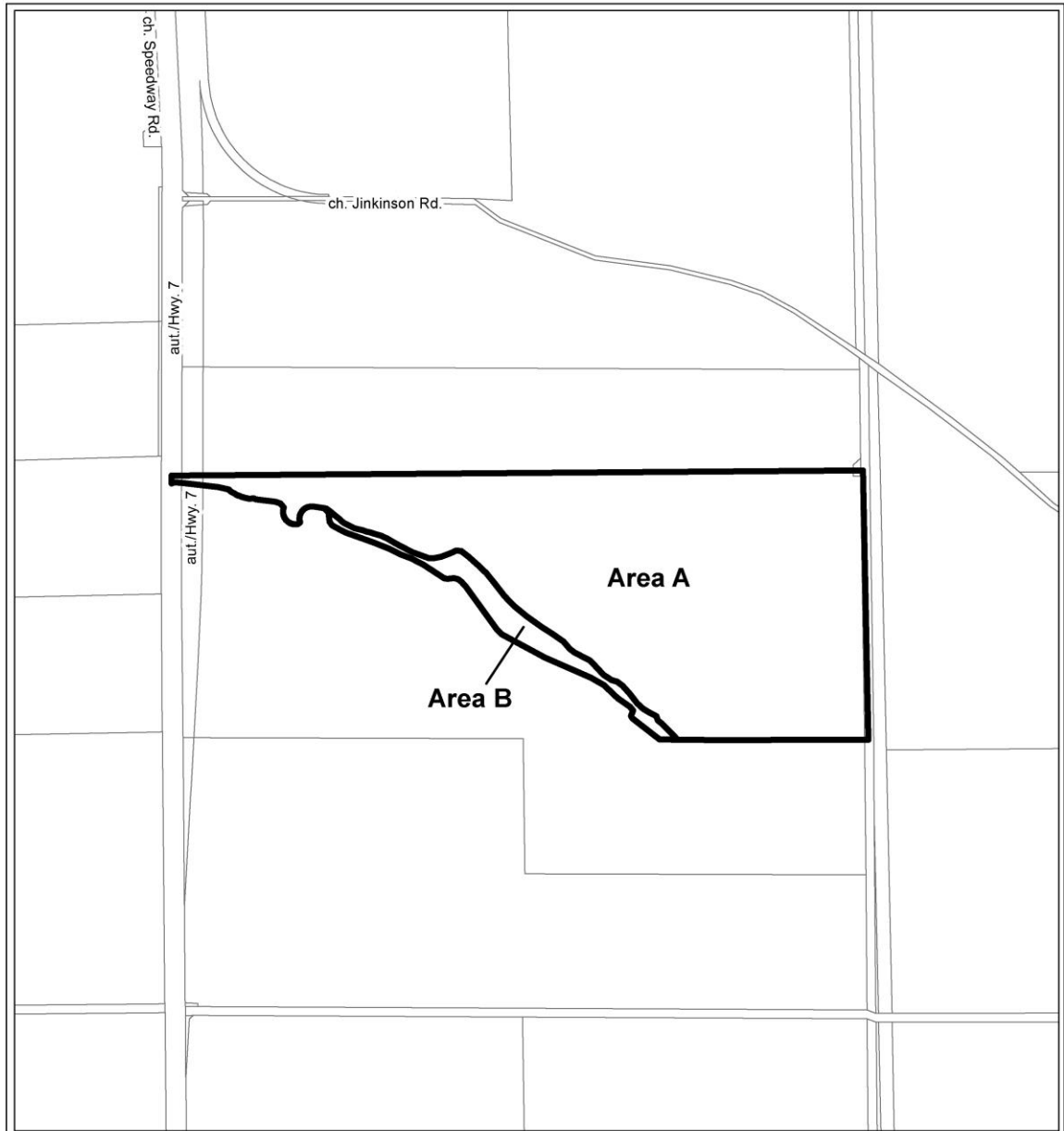
1. The Zoning Map of By-law No. 2008-250, entitled the “City of Ottawa Zoning By-law” is amended by rezoning the lands shown on Attachment 1 to this by-law as follows:
 - (a) Area A from MR to ME[856r]; and,
 - (b) Area B from MR to EP3.
2. Section 240 – Rural Exceptions of the said By-law No. 2008-250 is amended by adding the following exception:

| I Exception Number | II Applicable Zone | Exception Provisions | | |
|--------------------------|--------------------------|---|----------------------------------|--|
| | | III Additional Land Uses Permitted | IV Land Uses Prohibited | V Provisions |
| 856r | ME[856r] | | | -No buildings, structures, aisles, driveways, storage, or extraction, within 50 metres of an EP3 zone. |

ENACTED AND PASSED this 11th day of October, 2017.

CITY CLERK

MAYOR



This is Attachment 1 to By-law Number 2017-328, passed October 11, 2017

Lands Affected by By-law

D02-02-14-0037

17-1379-X

M:\Zoning_bylaw\bylaws\

©Parcel data is owned by Teranet Enterprises Inc. and its suppliers
All rights reserved. May not be produced without permission
THIS IS NOT A PLAN OF SURVEY

©Les données de parcelles appartient à Teranet Enterprises Inc.
et à ses fournisseurs. Tous droits réservés. Ne peut être reproduit
sans autorisation. CECI N'EST PAS UN PLAN D'ARPENTAGE

**LANDS AFFECTED PART OF THE ZONING
MAP OF BY-LAW NO. 2008-250**

Area A to be rezoned from MR to ME[856r]

Area B to be rezoned from MR to EP3



NOT TO SCALE

